



Russian Federation and Republic Kazakhstan MCD invites you to participate in the Divisional Special Operations Tour 2020. During this tour, you will feel like a pilot who performs interesting tasks in aerial works in Russia: search and rescue operations, aerial firefighting operations, agricultural flights and much more!

Upon the successful completion of the tour, you will receive the "Division Special Operations Tour" award in your profile.

Revision history

Paragraphs	Date of change
<ol style="list-style-type: none">1. Changed maximum ground speeds in legs.2. Changed time for flight in working area in leg №2.3. Changed allowed flight rules and routes for your FP in leg №4, №54. Added information to leg №3, №4, №5	26.02.20
<ol style="list-style-type: none">1. Changed allowed aircraft types in leg №3.2. Changed allowed flight altitude for firefighting in leg №5.3. Changed allowed flight altitude, changed allowed aircraft types, changed a mission in leg №7.	06.05.20
<ol style="list-style-type: none">1. Added new fire object in leg №4, leg №5	02.07.20

Rules

- All legs must be flown online, with real weather.
- ATC guidance is not necessary all the way.
- Flights must be flown in real-time mode (1x sim rate, accelerated mode not allowed) in accordance with IVAO Rules.
- A maximum disconnection of 15/20 minutes will be accepted due to simulator or PC crash reasons. Please indicate the time of disconnection from the network in the remarks to your leg report.
- Please pay attention to your flight plans. Flight plans with wrong departure/arrival airfields will not be accepted!
- All legs should be flown in the correct order.
- Remember to report legs in UTC time and 24 hours format.
- The Maximum flight level, type of aircraft and the route for FP are given for each leg of the tour.
- The maximum speed of each leg is written in the Tours Reporting System on [the Special Operations Tour page](#).
- Your callsign should be the registration number of the aircraft or callsign of SOG.
- Include as remark in your flight plan RMK/XRSO20/LEGxx where xx is a leg number and other remarks, which are in each leg.
- After connecting to the network, your aircraft must be stationary while online, on the apron or gate for a minimum of 6 minutes.
- After landing and taxi to the apron or gate, your aircraft must be stationary while online for a minimum of 6 minutes.
- After completing a flight and had waited 6 minutes as required, you must disconnect from the network before starting your next flight.

X-Plane users must download - [OpenSceneryX](#) and - [RuScenery](#) for correctly sceneries working. Pilots need to use sceneries, which are in each leg.

You need to install additional objects and sceneries: [FSX\(P3D\)/X-Plane 10\(11\)](#)

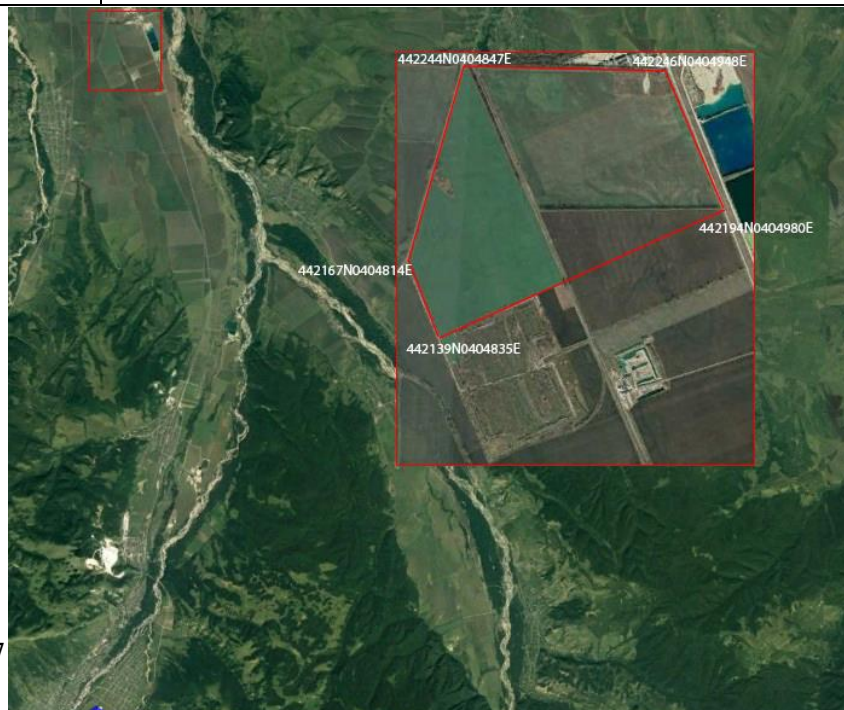
Leg list

1. Pulkovo (ULLI) – NII NMP (ULLE) | Medical evacuation in Saint-Petersburg.
2. Psebay (ZE4B) – Psebay (ZE4B) | Agricultural flight in Psebay.
3. Koltsovo (USSS) – Koltsovo (USSS) | Construction work flight Ekaterinburg.
4. Bratsk (UIBB) – Bratsk (UIBB) | Aerial firefighting operation (part №1) in Bratsk.
5. Bratsk (UIBB) – Bratsk (UIBB) | Aerial firefighting operation (part №2) in Bratsk.
6. Khrabrovo (UMKK) – Khrabrovo (UMKK) | Calibration flight in Kaliningrad
7. Ostafyevo (UUMO) – Ostafyevo (UUMO) | Aerial photography flights of a concert over Red Square.
8. Yelizovo (UHPP) – Yelizovo (UHPP) | Aerial photography flight of Kamchatka Peninsula.
9. Gorno-Altaysk (UNBG) – Gorno-Altaysk (UNBG) | Animal rescue flight in Gorno-Altaysk.
10. Talagi (ULAA) – Talagi (ULAA) | Search operation in Arkhangelsk.

<h3>Leg №1</h3> <h3>Medical evacuation in Saint-Petersburg</h3>	
Flight rules	IFR or VFR
Departure	ULLI
Arrival	ULLE
Distance	118.5 km/64 nm
Maximum altitude	3500 feet
Route	6002N02920E
Aircraft type	Light and medium helicopter without any primary (offensive) armaments by design.
Mission	<p>You received a message, that one of the barge captains in the Gulf of Finland (600239N0292017E) got sick. The arriving ambulance reported that he needs to be transported by a helicopter to the Research Institute of Emergency medicine (ULLE). It is necessary to takeoff from Pulkovo Airport (ULLI) and fly heading 287° 58.5 km/31.6 nm to intercept radial 106° VOR-DME SPB (113.4) or for visual contact with the barge. Hold over the bow section of the barge for three minutes to load the sick captain into the helicopter. Then fly heading 97° 60 km/32.4 nm to intercept radial 198° VOR-DME SPB (113.4) or for visual contact with Research Institute of Emergency medicine (ULLE) helipad, then land.</p> <p>Include as remark in your flight plan: STS/HOSP – medical-sanitary flight</p>

	DLE/6002N2920E0003 – holding over barge for three minutes. To pass this leg, set daylight simulation in your simulator settings.
Sceneries	ULLI: FSX(P3D)/X-Plane 10(11) ULLE is in additional sceneries

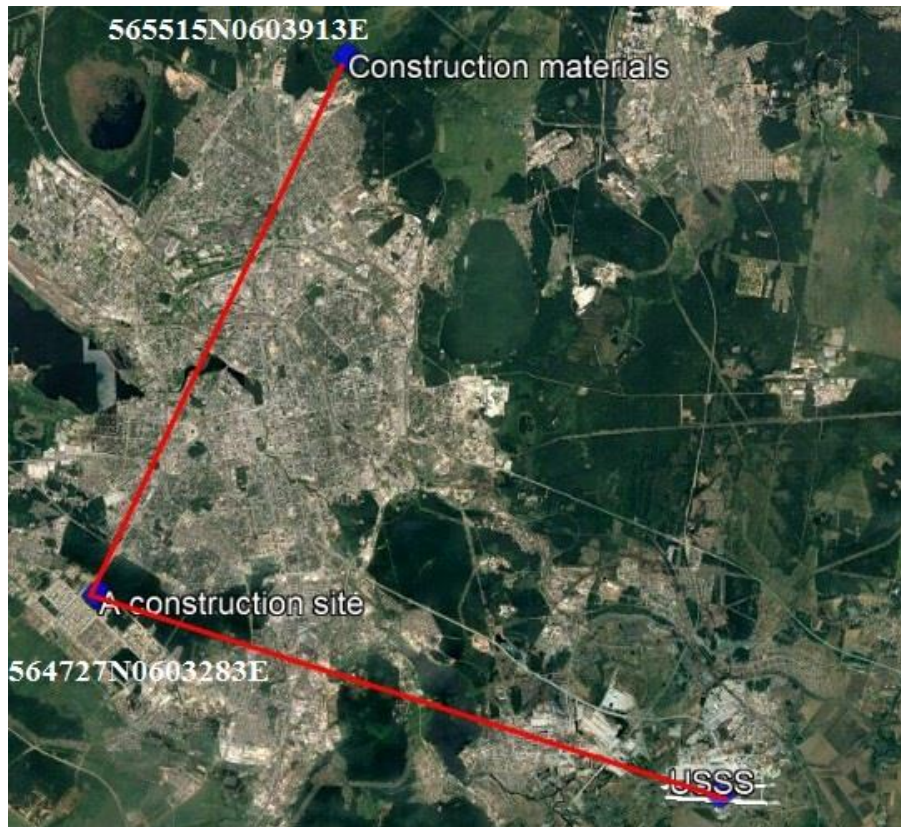
Leg №2 Agricultural flight in Psebay	
Flight rules	VFR
Departure	ZE4B
Arrival	ZE4B
Distance	111 km/60 nm
Maximum height	150 meters
Route	XXXX /ZONA 442139N 0404835E 442194N 0404980E 442246N 0404948E 442244N 0404847E 442167N 0404814E 442139N 0404835E/ XXXX
Aircraft type	Light aircraft (single engine) without any primary (offensive) armaments by design.
Mission	<p>The officials of the Mostovskoy village (Krasnodar Krai) ordered field fertilization to local airline. You have to depart from Bsebay (ZE4B), then fly to the working area near Mostovskoy village with coordinates: 442139N0404835E -442194N0404980E - 442246N0404948E - 442244N0404847E - 442167N0404814E - 442139N0404835E and fly there for 20 minutes at 50 meters height over obstacles on an arbitrary path. After the work is completed, fly back to Bsebay (ZE4B).</p> <p>In your flight plan route set coordinates of waypoints to/from (where xxxx) the working area.</p> <p>To pass this leg, set summertime in your simulator settings.</p>
Sceneries	ZE4B is in additional sceneries.



Leg №3

Construction work flight Ekaterinburg

Flight rules	IFR or VFR
Departure	USSS
Arrival	USSS
Distance	94.4 km/51 nm
Maximum height	900 meters
Route	DCT ZZZZ DCT ZZZZ DCT ZZZZ DCT ZZZZ DCT ZZZZ DCT
Aircraft type	Medium and Heavy helicopter without any primary (offensive) armaments by design.
Mission	<p>There is a building house in Ekaterinburg.</p> <ol style="list-style-type: none"> Containers in Koltsovo Airport (USSS) are located near stands 22-24. It is necessary to fly over them and transfer one container to the construction site (564727N0603283E). After takeoff fly heading 273° 15.9 km/8.6 nm from VOR-DME EKB (113.2), then land on the site. After that, fly back to Koltsovo following heading 93° 15.9 km/8.6 nm from VOR-DME EKB (113.2) and transfer one more container to the site. Fly heading 008° 15.9 km/8.6 nm from the site to take construction materials (construction beams) (565515N06003913E) intercept radial 141° and distance 21.5 km/11.6 nm from VOR-DME EKB (113.2), land in the area, fly over a piece of materials and fly back following heading 188° 15.9 km/8.6 nm, then land. Perform a second delivery of the materials to the area. After the second delivery, fly back to Koltsovo. <p>During the landing on the area, near the materials, in Koltsovo, you must wait on the ground for 3 minutes.</p> <p>Include as remark in your flight plan some step-landings: PAP/5647N06032E0003 USSS0003 5647N06032E0003 5655N06039E0003 5647N06032E0003</p> <p>We recommend that you study the GIF file with explanations for this mission.</p> <p>To pass this leg, please set daylight simulation in your simulator settings.</p>
Sceneries	USSS: FSX(P3D)/X-Plane 10(11)

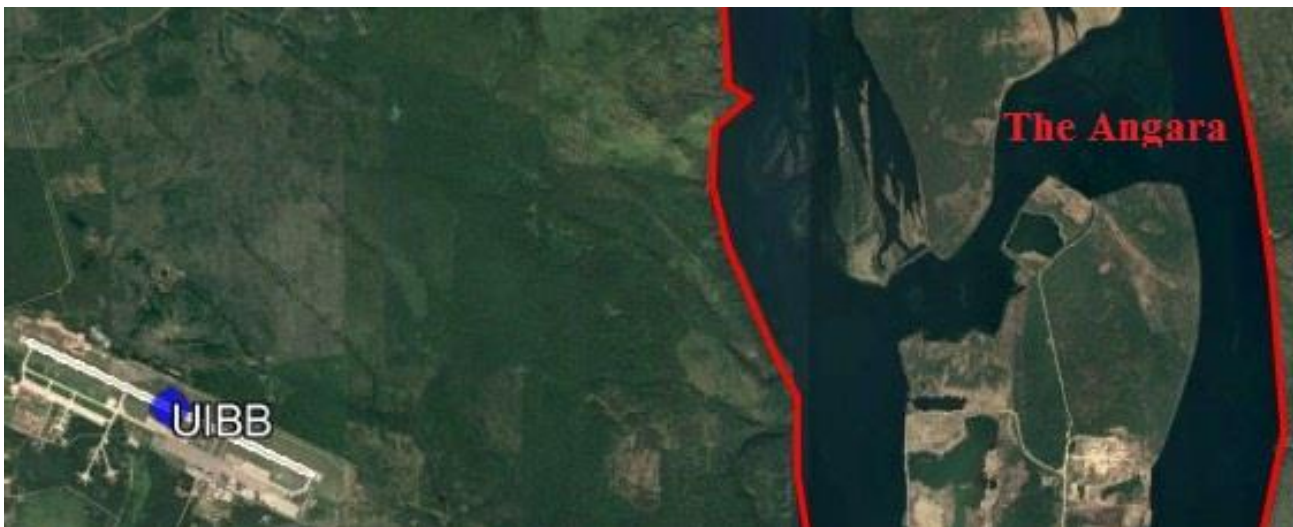


Leg №4 Aerial firefighting operations (part №1) in Bratsk

Flight rules	IFR or VFR
Departure	UIBB
Arrival	UIBB
Distance	137 km/74 nm
Maximum height	900 meters
Route	/ZONA 563033N 1012447E 564832N 1013858E 564617N 1021431E 561412N 1015926E 563033N 1012447E/
Aircraft type	Light aircraft without any primary (offensive) armaments by design.
Mission	<p>Multiple forest fires have started in the region of Bratsk, concerns are that the town may be in danger. In order to locate them, the emergency aviation groups have been alarmed. You need to fly by the specified path and observe the fires to locate their origins, which are somewhere approximately 9.2 km/5 nm far from the charted route. When a fire's origin is found, you need to overfly it and return to your path.</p> <p>The route: 562778N1014586E - 563266N1013545E - 563720N1014585E - 564306N1014164E - 564343N1020376E - 563222N1015171E - 562189N1020189E</p> <p>Write down all the found fire centers coordinates to participate in leg №5.</p> <p>Include as remark in your flight plan: STS/FFR – performing aerial firefighting operation.</p>

	To pass this leg, set daylight and summertime in your simulator settings. You need to find a minimum of three (3) fires sources.
Sceneries	UIBB: FSX(P3D)/X-Plane 10(11)

Leg №5 Aerial firefighting operations (part №2) in Bratsk	
Flight rules	IFR or VFR
Departure	UIBB
Arrival	UIBB
Distance	74 km/40 nm
Maximum height	900 meters
Route	/ZONA 563033N 1012447E 564832N 1013858E 564617N 1021431E 561412N 1015926E 563033N 1012447E/
Aircraft type	Light and medium helicopter without any primary (offensive) armaments by design.
Mission	<p>All fire sources have been located. Now, you have to commence the firefighting. In order to fight a fire, overfly its source at a height of 100 meters, while then returning to collect water from the Angara river (water collection is done at a height lower than 50 meters). After fire sources are extinguished, return to the Bratsk Airport (UIBB)</p> <p>Include as remark in your flight plan: STS/FFR – performing aerial firefighting operation.</p> <p>To pass this leg, set daylight and summertime in your simulator settings</p> <p>You need to extinguish a minimum of three (3) fires sources.</p>
Sceneries	UIBB: FSX(P3D)/X-Plane 10(11)



Leg №6 Calibration flights in Kaliningrad

Flight rules	IFR or VFR
Departure	UMKK
Arrival	UMKK
Distance	107 km/58 nm
Maximum height	1000 meters
Route	<p>RWY 24: DCT KRD240005 DCT KRD320005 DCT KRD DCT KRD120010 DCT KRD240005 DCT KRD270004 DCT</p> <p>RWY 06: DCT KRD062005 DCT KRD320007 DCT KRD DCT KRD120010 DCT KRD240005 DCT KRD270004 DCT</p>
Aircraft type	Light aircraft (one engine) without any primary (offensive) armaments by design.
Mission	<p>Brand new navigation equipment has been installed at Khrabrovo Airport. You have to perform a checking flight for the new KRD VOR/DME beacon (117.05).</p> <p>If Runway 24 in use:</p> <ol style="list-style-type: none"> 1. After takeoff fly on runway heading to 9.2 km/5 nm distance from KRD. 2. Fly heading 10° to intercept radial 320° KRD. 3. Fly to KRD. 4. After passing KRD fly 18.2 km/10 nm on heading 120° from KRD. 5. Fly heading 280° from KRD and intercept radial 240° KRD. 6. Fly heading 10° from KRD and intercept radial 270 KRD°. 7. Perform a landing. <p>If Runway 06 in use:</p> <ol style="list-style-type: none"> 1. After takeoff fly 9.2 km/5 nm on runway heading from KRD. 2. Fly heading 290° to intercept radial 320° KRD. 3. Fly to KRD. 4. After passing KRD fly 18.2 km/10 nm on heading 120° from KRD. 5. Fly heading 280° from KRD and intercept radial 240° KRD. 6. Fly heading 10° from KRD and intercept radial 270° KRD. 7. Perform a landing. <p>Include as remark in your flight plan: STS/FLTCK – performing aerial firefighting operation. Checking the navigation aids for calibration.</p>
Sceneries	UMKK: FSX(P3D)/X-plane 10(11)

Leg №7	
Aerial photography flight of a concert over Red Square	
Flight rules	IFR or VFR
Departure	UUMO
Arrival	UUMO
Distance	45 nm
Maximum height	1200 meters
Route	You need to make the route yourself
Aircraft type	Light helicopter without any primary (offensive) armaments by design.
Mission	<p>A TV channel decided to cover a concert located at the Red Square (554522N373723E). You have to depart from Ostafyevo (UUMO) airport and fly to the Red Square area on heading 003° 28.1 km/15.2 nm. After that, fly there for 20 minutes at approx. 100 meters height, while the TV employees will be filming the concert, after fly heading 183° 28.1 km/15.2 nm for a landing at Ostafyevo airport.</p> <p>To pass this leg set daylight simulation in your simulator settings.</p> <p>In remarks please indicate that you will be flying over Red Square for a period of time: DLE/5545N3737E0020</p> <p>To pass this leg, set daylight simulation in your simulator settings.</p>
Sceneries	UUMO: FSX(P3D)/X-plane 10(11)

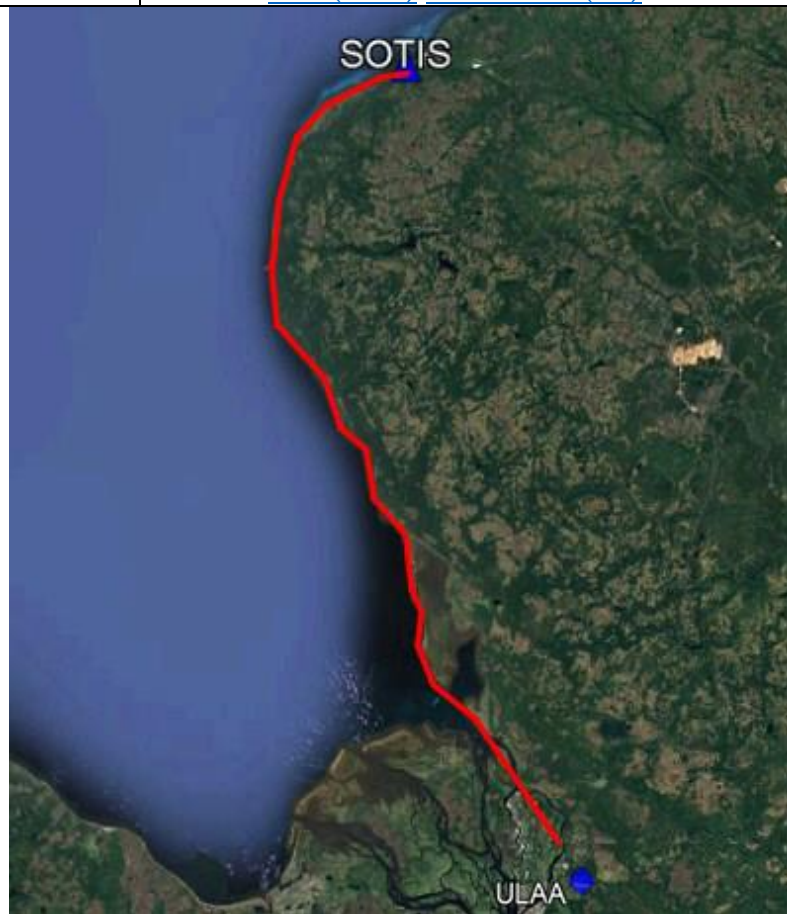
Leg №8	
Aerial photography flight of Kamchatka Peninsula	
Flight rules	VFR
Departure	UHPP
Arrival	UHPP
Distance	250 km/135 nm
Maximum flight level	195
Route	You need to make the route yourself
Aircraft type	Light aircraft without any primary (offensive) armaments by design.
Mission	<p>A local filming studio is preparing for a recording on The Kamchatka peninsula. Fly following Kamchatka's coastline from waypoint SAUNA (525838N1584992E) to waypoint SIPVA (530625N1600202E) and back to Elizovo (UHPP). During the flight, make 3 screenshots and include them with the leg report.</p>
Sceneries	UHPP: FSX(P3D)/X-Plane 10(11)



<h3>Leg №9</h3> <h3>Animal rescue flight in Gorno-Altaysk</h3>	
Flight rules	IFR or VFR
Departure	UNBG
Arrival	UNBG
Distance	71 km/38 nm
Maximum height	1800 meters.
Route	You need to make the route yourself.
Aircraft type	Light and medium helicopter without any primary (offensive) armaments by design.
Mission	<p>An injured animal has been found near Bystryanka village (521751N0854989E). To find it, fly heading 353° for 35.5 km/19.2 nm from the airport, perform a landing and load the animal into the helicopter (wait on the ground for three minutes). Then fly to Gorno-Altaysk (UNBG) airport following heading 173° 35.5 km/19.2 nm.</p> <p>Include as remark in your flight plan a step landing: PAP/5217N08549E0003</p> <p style="color: red;">To pass this leg, set daylight simulation in your simulator settings.</p>
Sceneries	UNBG: X-Plane 10(11)

<h3>Leg №10</h3> <h3>Search operation in Arkhangelsk</h3>	
Flight rules	VFR
Departure	ULAA
Arrival	ULAA
Distance	270 km/150 nm
Flight level (only)	070/060
Route	You need to make the route yourself.
Aircraft type	Light aircraft without any primary (offensive) armaments by design.
	According to Coast Guard information, a boat has been lost two-three nautical miles offshore. Fly following the coastline to SOTIS

	waypoint (654100N0400750E). If you find the boat, fly over it and head back to Talagi (ULAA).
Sceneries	ULAA: FSX(P3D)/X-Plane 10(11)



Do not hesitate to contact us via email xr-soc@ivao.aero, xr-soac@ivao.aero.